

The Kid's Edge

HEARTH GUARD

INSTALLATION INSTRUCTIONS

Due to kids' curiosity we suggest that any safety device should be installed when kids are not present.

1. UNPACKING UNIT

Remove tape on tightening rod (6). Remove filler pad (2) from inside cardboard insert and set aside for later use.

2. INSTALLING UNIT ON HEARTH

This device consists of two sections. The left side is completely covered with pad. The right side, which is partially covered with pad, slides under the left side for adjustment. Now extend sections of unit and place on hearth. Pull section together until snug on hearth. Without allowing sections to slide, remove unit and turn over to expose tightening rod (6). Insert rod hook into nearest hole and pull sections apart so there is enough tension to keep the hook in hole. Reposition unit on hearth. Insert phillips screwdriver into hole at right corner (3). Turn tightening bolt clockwise until tension is felt. Now, ensure that unit is in place by pushing down and back at corners. Tighten bolt further until unit is secure on hearth. (NOTE: if unit is not secure and tightening bolt will not turn further, then loosen bolt, remove unit and move adjustment hook to next hole. Now reinstall unit.) **CAUTION: IT IS POSSIBLE TO TIGHTEN BOLT TOO MUCH CAUSING ENDS TO FLARE OUT CAUSING LOSS OF GRIP.**

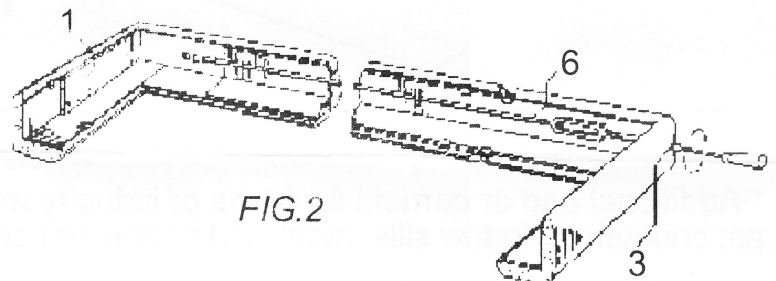
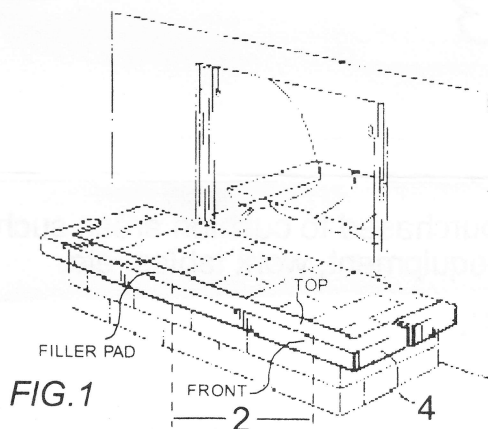
3. CUTTING FILLER PAD

For appearance this step is **IMPORTANT**.

Measure the gap where frame is exposed. Add 3/8 inch to that measurement and mark the filler pad (2). Place pad on edge of cardboard box, matching mark on pad with **black alignment on box**. Use **only** a sharp long blade knife such as a fillet knife. **Do not** use razor knife, utility knife or other short blade knife. Lubricate entire length of knife blade with liquid soap or soapy water. With light pressure, move the knife back and forth keeping the blade straight with alignment line. After top half of pad is cut, turn pad over and repeat.

4. INSTALLING FILLER PAD

Peel off adhesive backing that bonds to front of frame only (see fig. 1). Carefully press right end of filler pad against pad on right side of frame. Allow filler pad to rest on top of frame while pressing front of pad into place. Once the front of filler pad is bonded to frame, lift top corner of filler pad and peel off remainder of adhesive backing. Now press down on top of filler pad to bond to frame. Installation is now complete. To remove unit simply loosen bolt to release tension.



IMPORTANT NOTICE:

"THE KID'S EDGE" is designed to help prevent injuries, however, it is always possible for some injuries to occur even though a protective device is used. We suggest adult supervision at all times.

PAD IS "UL RECOGNIZED"

OPTIONAL EXTENSION KIT INSTRUCTIONS (For Depth Only)

1. With unit in place on hearth, measure and cut extension pads (5) to desired length. Always cut pad slightly longer (approximately 1/4 inch) than space to cover. Note: For knife blade alignment, use line on cardboard box.
2. Remove entire unit from hearth. Under frame at each end, peel back protective rubber strip (1). Slide extension frame (6) into clip (7) so that exposed portion of frame will be adequate to accommodate pad. Note: If depth of hearth is between 8" and 12" it will be necessary to shorten extension frame with hack saw or tin snips. Be careful of sharp edges after cutting.
3. Replace rubber strip at exact position from which it was removed, except that part of the strip that will now cover part of the extension frame.
4. Install unit on hearth. Now carefully peel off adhesive backing from one side of the extension pad and bond it to the frame starting next to the main frame pad. Then lift corner of extension pad and peel off remaining backing to bond other side to frame.

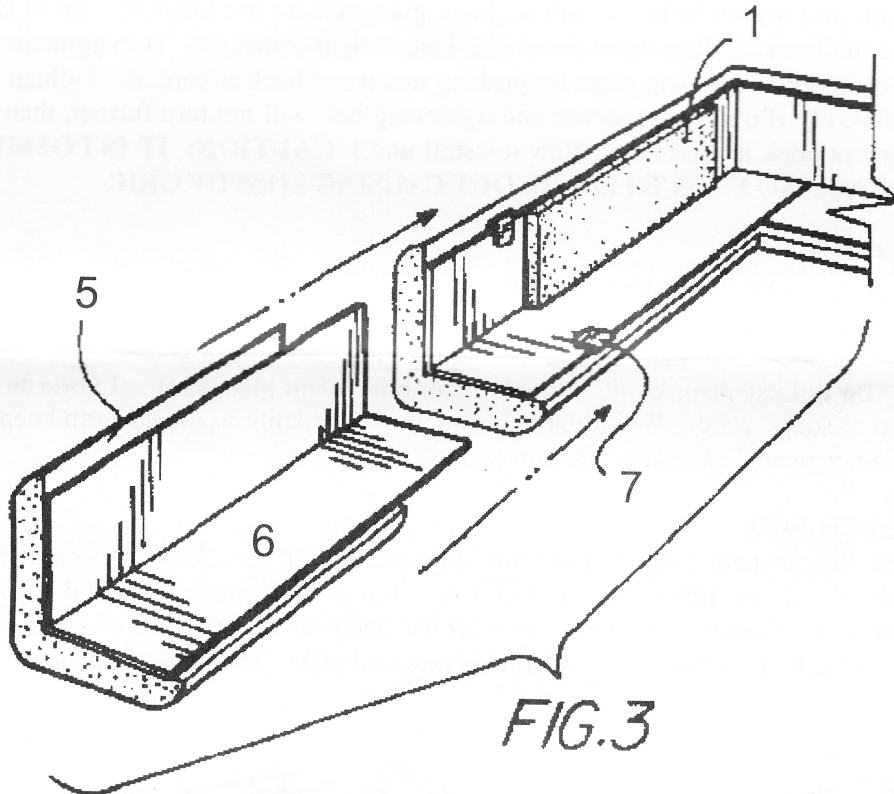


FIG.3

* Additional pad or corners for home or industry may be purchased to cushion areas such as: counters, window sills, overhead edges and corners, equipment, work tables, etc.

CARDINAL GATES, INC.

15 ST. JOHN'S CIRCLE

NEWNAN, GA 30265

1-800-312-3380

FAX 770-252-4122

email: cgates@numail.org

www.cardinalgates.com