

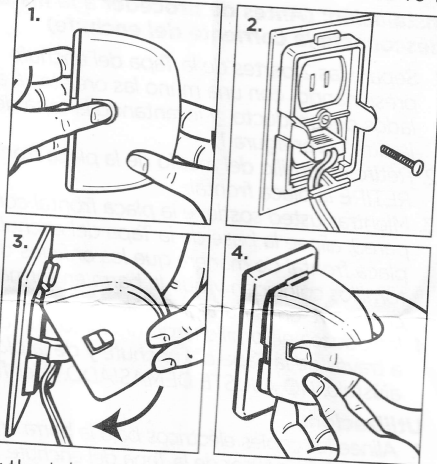
Safety 1st

Double-touch Plug 'N Outlet Covers

©2007 Dorel Juvenile Group
Made in CHINA.
Model 10404

To Install: (Turn off power to outlet before installation)

1. Separate the 2 pieces of the Outlet Cover by pushing in on the tabs on either side of the product with one hand, and lifting the Outlet Cover up and away with the other hand. (See fig. 1)
2. Remove center screw from face plate. DO NOT remove face plate.
3. While holding face plate against wall, position base of Outlet Cover over the face plate so that both screw holes line up, and the T-bar is located at the bottom.
4. Insert the new longer screw (supplied) through Outlet Cover base and face plate and tighten. DO NOT overtighten. (See fig. 2)



To Secure:

1. Align electrical cords under the T-bar at the bottom of the Outlet Cover. (See fig. 2)
2. Position the slot in the top of the Cover over the tab at the top of the base. Pivot the cover down over the tabs on the base. Be certain that the electrical cords fit through the holes in the cover, and snap the cover into place. (See fig. 3)
3. Be certain you hear the "click" of both finger tabs as they snap into position. Gently pull on cover to ensure it is secure.

To Open:

1. Press release tabs with two fingers of one hand and with other hand pivot the Cover up and away.

PLEASE NOTE: The release buttons on each side of the cover are initially difficult to depress. This was intentionally designed to provide extra strength and deter "little fingers" from prying it open.