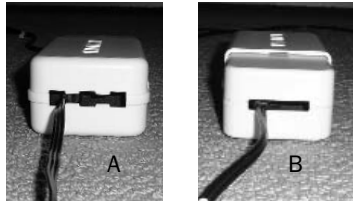


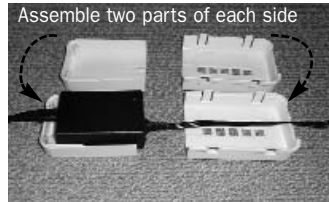
## POWER BLOCK COVER FOR IN-LINE ADAPTERS #10407

Covers unsafe in line adapters from notebook computers, printers, some styles of floor lamps and other electrical and electronic items. Can also be used to cover connections of most extension cords.

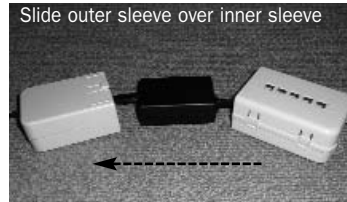
1



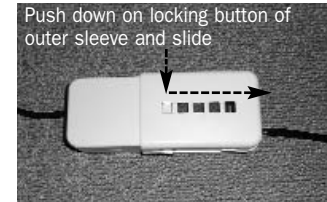
2



3



4



### To Install

1. Determine which end of the Power Block your AC cord should thread through. The AC cord is the cord that has the plug that inserts into the outlet. Large round cords should thread through the end with the three

square openings (A). Flat cords should thread through the end with the single horizontal opening (B).

2. Assemble the two parts of each side of the Power Block.

3. Slide the outer sleeve over the inner sleeve until it reaches the correct size to hold the adapter.

4. To adjust or open the Power Block, press down on the locking

button of the outer sleeve and slide.

Note: The Power Block is designed to be somewhat difficult to open so that it will not accidentally separate when in use.

**Safety Innovations™**

Billerica, MA 01821 800-598-8911

