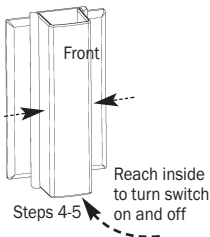
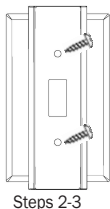
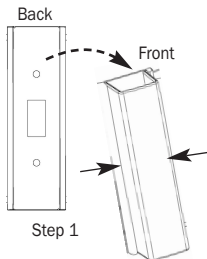


LIGHT SWITCH GUARD-STANDARD #10411



To Install

1. Squeeze the front part of the cover on both sides to separate the front from the back plate.
2. Remove the two screws on your existing switch plate.
3. Place the switch guard back plate on your existing switch plate and secure using the two provided screws.
4. Place front cover over the back plate and squeeze both sides together to secure to back plate.
5. Reach your finger inside the front cover to turn light switch on and off.

Note: This product is designed to help minimize accidents. Use of this product is not a substitute for adult supervision.

Safety Innovations™

Billerica, MA 01821 800-598-8911
Made in China

Safe Beginnings® is a registered trademark of Safe Beginnings, Inc.
Safety Innovations™ is a division of Safe Beginnings, Inc.

